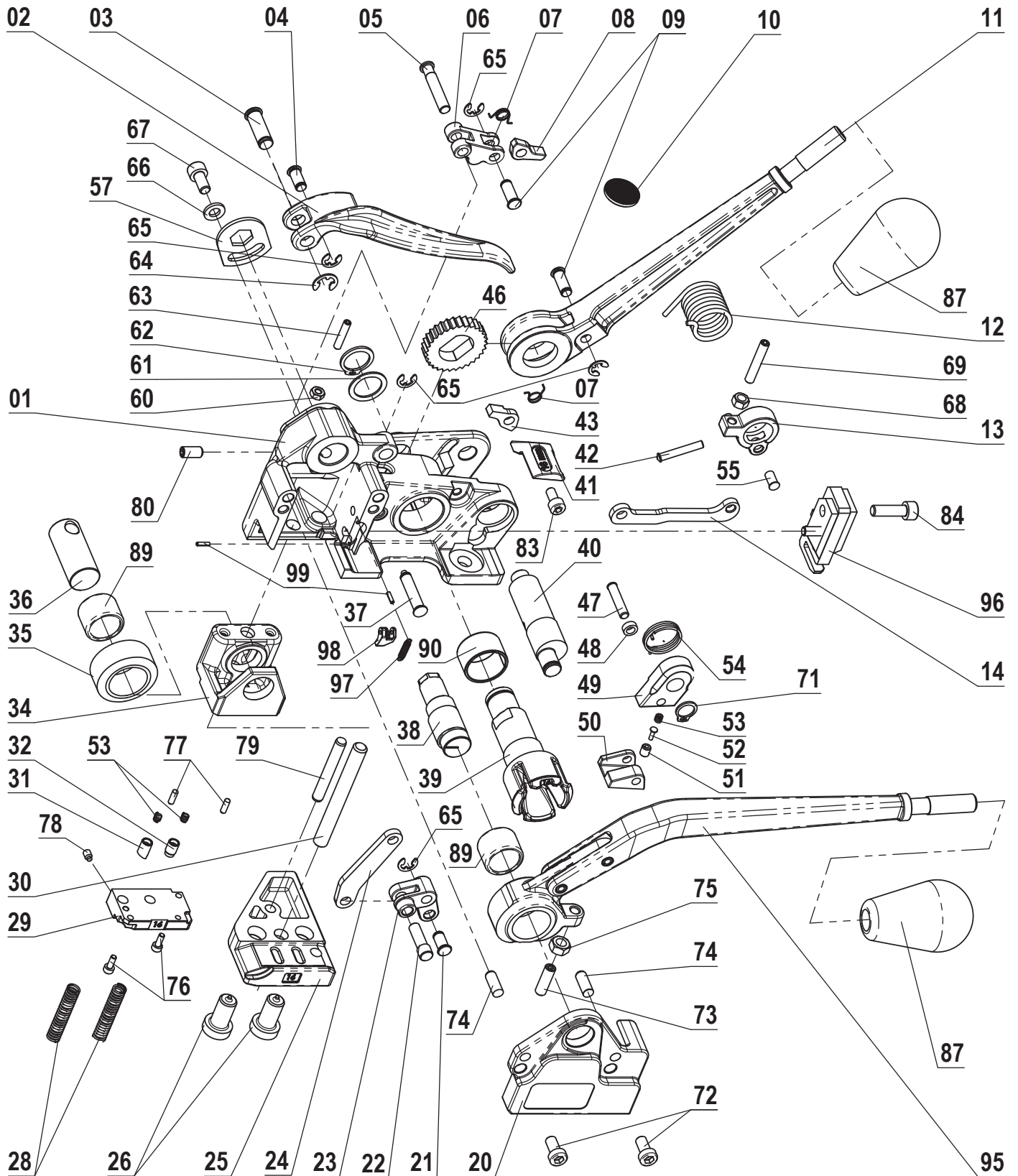


# MUL-350

## Combination Tool for 5/8" PET Strapping



# MUL-350 Part list

## Combination Tool for 5/8" PET Strapping

KEY No	DESCRIPTION	QTY.
350-01	FRAME	1
350-02	HANDLE	1
350-03	HANDLE PIN	1
350-04	ARM PIN	1
350-05	PAWL HOUSING PIN	1
350-06	PAWL HOUSING	1
350-07	PAWL SPRING	2
350-08	PAWL	1
350-09	PAWL PIN	2
350-10	GRIPPER PAD	1
350-11	TENSION HANDLE	1
350-12	LEVER SPRING	1
350-13	LEVER	1
350-14	ARM	1
350-20	COVER	1
350-21	CUTTER ARM PIN	1
350-22	CUTTER PIN	1
350-23	CUTTER LEVER	1
350-24	CUTTER ARM	1
350-25	BASE 16 mm	1
350-26	BASE SCREW	2
350-28	DIE HOLDER SPRING	2
350-29	DIE PLATE 16 mm	1
350-30	GUIDE PIN	1
350-31	PAWL	1
350-32	HOLDING CLAMP	1
350-34	DIE HOLDER	1
350-35	CAM FOLLOWER	1
350-36	DIE HOLDER AXLE	1
350-37	CUTTER LEVER PIN	1
350-38	ECCENTRIC AXLE	1
350-39	WINDLASS 16 mm	1
350-40	ECCENTRIC SHAFT	1
350-41	STRAP GUIDE 16 mm	1
350-42	LEVER PIN	1
350-43	TENSION PAWL	1
350-46	RATCHET WHELL	1
350-47	GRIPPER FOOT SHAFT	1
350-48	GRIPPER FOOT BUSHING	1

KEY No	DESCRIPTION	QTY.
350-49	GRIPPER BODY	1
350-50	GRIPPER FOOT	1
350-51	GRIPPER FOOT SCREW	1
350-52	GRIPPER FOOT PIN	1
350-53	GRIPPER FOOT SPRING	3
350-54	GRIPPER SPRING	1
350-55	PIN	1
350-57	ADJUSTMENT PLATE	1
350-60	NUT M4	1
350-61	WASHER 16	1
350-62	RETAINING RING 5/8	1
350-63	SET SCREW M4x20	1
350-64	E-RING 7	1
350-65	E-RING 5	5
350-66	WASHER 6	1
350-67	SCREW M6x12	1
350-68	NUT M5	1
350-69	SET SCREW M5x30	1
350-71	RETAINING RING 12	1
350-72	SCREW M6x16	2
350-73	ADJUSTMENT SCREW M6x20	1
350-74	DOWEL PIN 6x16	2
350-75	NUT M6	1
350-76	SCREW M3x8	2
350-77	DOWEL PIN 3x10	2
350-78	SET SCREW M4x6 DOG POINT	1
350-79	DOWEL PIN 6x45	1
350-80	SET SCREW M6x12	1
350-83	SCREW M5x10	1
350-84	SCREW M6x20	1
350-87	KNOB	2
350-89	BEARING	2
350-90	PLANE BEARING	1
350-95	SEALING HANDLE	1
350-96	CUTTER	1
350-97	SPRING	1
350-98	GUIDE PAWL	1
350-99	SPRING PIN	2