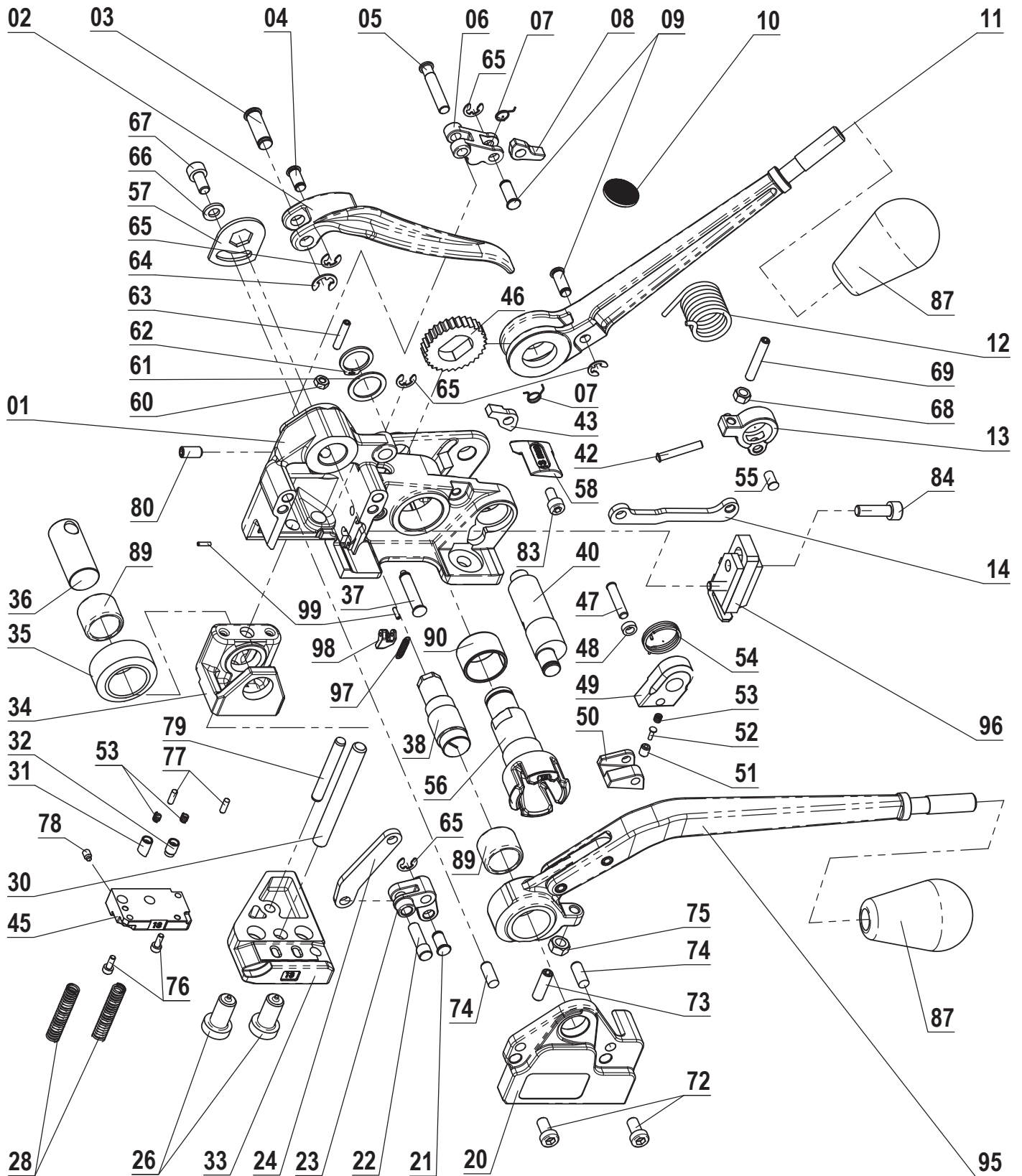


MUL-351

Combination Tool for 1/2" PET Strapping



MUL-351 Part list

Combination Tool for 1/2" PET Strapping

KEYNo	DESCRIPTION	QTY.
351-01	FRAME	1
351-02	HANDLE	1
351-03	HANDLE PIN	1
351-04	ARM PIN	1
351-05	PAWL HOUSING PIN	1
351-06	PAWL HOUSING	1
351-07	PAWL SPRING	2
351-08	PAWL	1
351-09	PAWL PIN	2
351-10	GRIPPER PAD	1
351-11	TENSION HANDLE	1
351-12	LEVER SPRING	1
351-13	LEVER	1
351-14	ARM	1
351-20	COVER	1
351-21	CUTTER ARM PIN	1
351-22	CUTTER PIN	1
351-23	CUTTER LEVER	1
351-24	CUTTER ARM	1
351-26	BASE SCREW	2
351-28	DIE HOLDER SPRING	2
351-30	GUIDE PIN	1
351-31	PAWL	1
351-32	HOLDING CLAMP	1
351-33	BASE 13 mm	1
351-34	DIE HOLDER	1
351-35	CAM FOLLOWER	1
351-36	DIE HOLDER AXLE	1
351-37	CUTTER LEVER PIN	1
351-38	ECCENTRIC AXLE	1
351-40	ECCENTRIC SHAFT	1
351-42	LEVER PIN	1
351-43	TENSION PAWL	1
351-45	DIE PLATE 13 mm	1
351-46	RATCHET WHELL	1
351-47	GRIPPER FOOT SHAFT	1
351-48	GRIPPER FOOT BUSHING	1
351-49	GRIPPER BODY	1
351-50	GRIPPER FOOT	1

KEYNo	DESCRIPTION	QTY.
351-51	GRIPPER FOOT SCREW	1
351-52	GRIPPER FOOT PIN	1
351-53	GRIPPER FOOT SPRING	3
351-54	GRIPPER SPRING	1
351-55	PIN	1
351-56	WINDLASS 13 mm	1
351-57	ADJUSTMENT PLATE	1
351-58	STRAP GUIDE 13 mm	1
351-60	NUT M4	1
351-61	WASHER 16	1
351-62	RETAINING RING 5/8	1
351-63	SET SCREW M4x20	1
351-64	E-RING 7	1
351-65	E-RING 5	5
351-66	WASHER 6	1
351-67	SCREW M6x12	1
351-68	NUT M5	1
351-69	SET SCREW M5x30	1
351-71	RETAINING RING 12	1
351-72	SCREW M6x12	2
351-73	ADJUSTMENT SCREW M6x20	1
351-74	DOWEL PIN 6x16	2
351-75	NUT M6	1
351-76	SCREW M3x8	2
351-77	DOWEL PIN 3x10	2
351-78	SET SCREW M4x6 DOG POINT	1
351-79	DOWEL PIN 6x45	1
351-80	SET SCREW M6x12	1
351-83	SCREW M5x10	1
351-84	SCREW M6x20	1
351-87	KNOB	2
351-89	BEARING	2
351-90	PLANE BEARING	1
351-95	SEALING HANDLE	1
351-96	CUTTER	1
351-97	SPRING	1
351-98	GUIDE PAWL	1
351-99	SPRING PIN	2