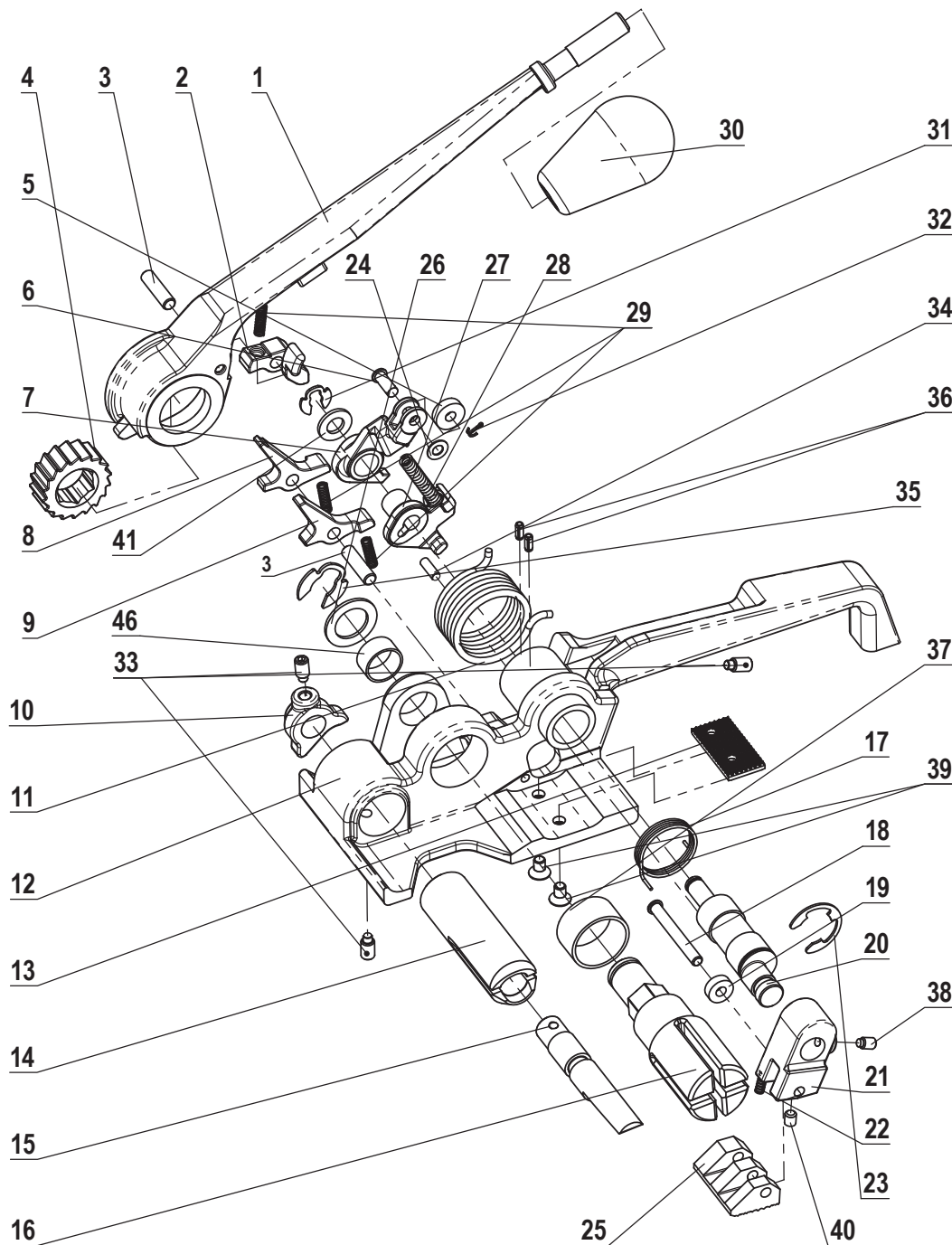


# MUL-370

## Heavy Duty Tensioner for PET Strapping



KEY No	PART DESCRIPTION	QTY.
370-01	HANDLE	1
370-02	TENSION PAWL	1
370-03	PIN	2
370-04	RATCHET WHEEL	1
370-05	ROLLER	1
370-06	ROLLER PIN	1
370-07	LEVER	1
370-08	PAWL LONG	1
370-09	PAWL SHORT	1
370-10	CUTTER LEVER	1
370-11	LEVER SPRING	1
370-12	FRAME	1
370-13	GRIPPER PAD	1
370-14	CUTTER HOUSING	1
370-15	CUTTER	1
370-16	WINDLASS	1
370-17	SPRING	1
370-18	GRIPPER FOOT SHAFT	1
370-19	GRIPPER FOOT ROLLER	1
370-20	ECCENTRIC SHAFT	1
370-21	GRIPPER HOLDER	1
370-22	GRIPPER FOOT SPRING	1
370-23	E RETAINING RING (3/4")	1
370-24	WASHER 5x11x0.7	1
370-25	GRIPPER FOOT	1
370-26	WASHER	1
370-27	AUXILIARY LEVER	1
370-28	AUXILIARY SPRING	1
370-29	PAWL SPRING	3
370-30	KNOB	1
370-31	KLIPRING 5/16"	1
370-32	COTTER PIN 1,2x8	1
370-33	SET SCREW M6x12 DOG POINT	3
370-34	NEEDLE ROLLER 4x11,8	1
370-35	KLIPRING 5/8"	1
370-36	SPRING PIN 1/8"x5/16"	2
370-37	PLANE BEARING	1
370-38	SET SCREW M5x8 HALF DOG POINT	1
370-39	COUNTERSUNK HEAD SCREW M5x8	2
370-40	SET SCREW M5x6	1
370-41	WASHER 8	1
370-46	PLANE BEARING SMALL	1